

RESTORING HOPE FOR

50 YEARS

1967 - 2017

Annual Report 2017
50th Anniversary Edition



We are Golden!



50 Years of Restoring Hope to Youth and their Families!

2017 marks the 50th Anniversary of New Haven Youth and Family Services. It's your belief in our mission, your dedication to the youth we serve and your incredible generosity that has brought us to this remarkable milestone.

Thank you!



Our vision of a welcoming campus.

A NOTE FROM OUR CHAIRMAN OF THE BOARD



What a year! It is hard to believe that we are in our last quarter of 2017. Time literally flies. I was shocked to remember that my tenure as board chair started on Jan. 1, 2015. I was blessed to grab the baton - following the superb leadership of Donn Bleau. Donn's passion, professionalism, support and

leadership of New Haven's board yielded a solid strategic plan—ultimately easing my transition into this new role.

My hat is off to the amazing staff at New Haven for realizing our mission and vision of excellence and service.

On behalf of New Haven's Board of Directors, we are sincerely grateful to be working with a wide range of dedicated, caring individuals and organizations. From government agencies to our local community - there's a genuine groundswell and focus on serving the needs of vulnerable youth and families. We are especially grateful to our Friends of New Haven, who have steadfastly dedicated themselves to the comfort, joy and success of our youth. Amazing & Impressive.

As we move forward in 2017 and beyond, I am proud of what New Haven has accomplished in the last 50 years - and excited about our future. New Haven continues to be healthy, strong and vibrant. Together we will continue efforts to serve our vulnerable youth and families: Caring, Equipping and Restoring Hope.

Warmest regards,

Shaun Timothy Alger
Chairman, New Haven Youth and Family Services



Our Board

Shaun Alger, CEO, VoloHaus

Donn Bleau, Managing Director,
Solomon Page Group, LLC

George Chamberlin, Business Editor,
KOGO AM600

GiGi Gleason, Community Advocate

Matt Hansen, First Vice President, UBS

Racquel Kolsrud, Client Relationship
Manager, Bonnema Wealth Management

Deacon Frank J. Mercardante, CEO,
Pacific Commerce Bank

Paul M. Polito, Managing Partner,
Polito Eppich Associates LLP

Jeannine Resha, Creative Director,
Coyote Bar & Grill

Patrice Saxon, Community Advocate

Patricia Sprotte, AIA,
Sprotte+Watson Architecture & Planning

Shay Timms, CEO, Troxel, LLC

Doreen Quinn, CEO,
New Haven Youth & Family Services



On behalf of everyone at New Haven, we are pleased to present our Golden Anniversary Report! After 50 years of service, New Haven continues to provide the specialized, high-impact services that help our most vulnerable children, youth, and families recover from trauma and family distress

with restored hope and dignity. The importance of our work can only be experienced in the stories of those we serve—for the young man who all but gave up on his hope to graduate from high school, to the demoralized mom who came to trust when New Haven staff listened compassionately, and joined her in meeting the specialized needs of her child and family. Our purpose and commitment is to spend the next 50 years *Caring, Equipping and Restoring Hope* for those we are called to serve.

For half a century, New Haven has served some of California's most vulnerable children, youth and families. Through these many years, we have remained agile in the face of change...but only with the commitment of people like you, who have encouraged and supported our continuous innovation and growth. Today, this support is more important than ever. Facing a rapidly changing healthcare system and the ever-increasing needs of young people grappling with a complex and often frightening world, all of us at New Haven are truly grateful for your steadfast presence amidst seemingly constant change. As we celebrate our 50th year, we look forward to our continued partnership, our shared commitment to our mission, and to the services we will provide—together.

By sharing in our commitment to restore hope and dignity of our most vulnerable, you have played a critical role in our work—not just this year, but for 50 years—and for that, we are immensely grateful. Your support has allowed us to provide clinical support, intensive in-home intervention, vocational training, specialized education, residential treatment, and highly individualized services designed to address the specific needs of our youth and families.

On the pages that follow, you will see stories of growth and healing, along with opportunities to join us in celebrating this Golden Year.

Doreen Quinn

Chief Executive Officer
New Haven Youth & Family Services

Our Vision

New Haven sets the standard in education and human services with family-focused programs that serve to strengthen, preserve and restore hope for youth and their families.

Our Mission

Caring...Equipping...Restoring Hope
New Haven is a private, not-for-profit, multi-service agency that provides professional care, education and treatment for youth and families with emotional, behavioral and learning challenges.

Our Core Values

COMPASSION:

Care...Concern...Respect Without Judgment

COMMUNITY:

Teamwork...Collaboration...Esprit de Corps

COMMITMENT:

Service...Excellence...Learning

COURAGE:

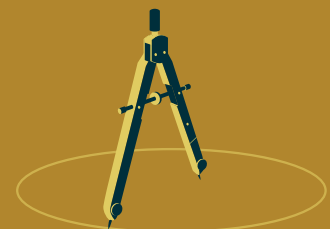
Integrity...Authenticity...Perseverance

CELEBRATION:

Gratitude...Stewardship...Joy

The Compass

The drafting compass depicted in our logo represents the dynamic experience students have at New Haven. Graphically, the compass is in the shape of an "A," an educational symbol of achievement. As a drafting tool, the compass is representative of New Haven's innovative underpinning of trades skills as a motivational application of academic curriculum. Compasses measure distances, like the distance the boys will travel on their journey. As a navigation tool, a compass is synonymous with New Haven's role as a guide that helps at-risk adolescents to find their way.



OUR SERVICES

Caring, Equipping, Restoring Hope...

...One Child, One Family, One Community At a Time

New Haven is a community-based nonprofit social services agency providing residential treatment, educational and vocational services and clinical intervention to approximately 780 at-risk youth and their families annually. Based on best practices that affect measurable outcomes, our innovative and comprehensive therapeutic education model develops life/work skills in a healthy environment.

- Our **special education program** works to engage and instruct youth who have been unsuccessful in public school due to behavioral, mental health, substance abuse, learning disabilities and/or truancy problems. We are contracted with 50+ school districts throughout Southern California.
- In addition to day services, we offer a **residential treatment program** that runs 24 hours a day, seven days a week in 12 six-bed residences throughout Vista, Oceanside and San Marcos. We have outpatient and mental health offices in both San Diego and Riverside counties.
- An important component of our comprehensive treatment program is **Therapeutic Behavioral Services**, where specialists coach struggling youth to recognize influences that trigger negative behaviors and exercise positive alternatives.
- A short term, intensive empowerment approach, New Haven's **Community Based Services** provide services in-home and in the local community.

The goal of our agency is to extend an individualized continuum of care to each youth so that they can return to their family and community requiring little or no further intervention. Every resource in our organization is directed toward that goal. We have been an enduring steward of hope for more than 15,000 children and their families since 1967 and we look forward to empowering a new generation by breaking down barriers and building bright futures.

*Licensed by the California Department of Social Services, Community Care Licensing Division
Certified by the California Department of Education Medi-Cal Certified Mental Health Provider*

Doreen Quinn's 30th Anniversary

So, the inside joke is that I started at New Haven when I was 3 years old, but in all seriousness, I still feel the passion and excitement of a youngster when I speak about the wonderful work we do at New Haven. While this is New Haven's 50th anniversary, it is my 30th year serving this amazing organization.

While our work can be challenging, I am enormously grateful for the opportunity to serve alongside such a dedicated and talented staff. Your embodiment of our core values and focus on our mission makes me so proud.

During these years, I have also been humbled by the selfless generosity of our board, friends and donors... those who simply show up because they care. Thank you for your service, leadership, generosity and faith in me. I can't say I will be at New Haven for another 30, but I can say my heart is still on fire for our mission and I'll stay as long as you'll have me.



WELCOME HOME PROJECT

Project Update

Thank you to those of you who helped us to kick off the Welcome Home Project in 2016 with your generous donations! This provided valuable momentum to begin construction and to continue raising funds for this much-needed project.

Since our last fundraiser...

- Construction was completed for the Healing Garden space! It has been an incredible addition to the campus experience for our youth.
- Of the twelve domains, four of them have been fully funded!
- Construction plans for the entirety of the campus have been finalized. This fall we will begin installing new windows and doors, building facades will be stuccoed and painted and new walkways will be developed for safety.

We have already seen the positive impact of the construction on the students and culture at New Haven. This visible impact gives us much excitement about the future, when the project will be brought to completion.

Partner with us during this exciting time as we celebrate 50 years of excellence!



IT TAKES A VILLAGE...



Community members kick off their winter shopping at New Haven's Annual Holiday Bazaar. New Haven students showcase their woodcrafts and culinary skills to the delight of our supporters.



Friends of New Haven making each boy's birthday special with cake, balloons and special gifts.



Las Patronas furthers New Haven's desire to make 'Hope Roll' with the funding of a food service van that allows students to generate income while developing their entrepreneurial spirit.



Friends of New Haven celebrate another year of fundraising and service to our youth and families at Coyote Bar and Grill in Carlsbad.



With a long history of service, St. Germaines Children's Charity has supported all of New Haven's career technical programs over the years, including our Woodcraft's Etc. program.



North Coast Church members arrive with love and good cheer to build New Haven's Healing Garden for our youth and their families.

Thanks to the Rancho Santa Fe Women's Fund for putting Community Youth Works on the road. Funding from RSFWF went toward the purchase of this service truck.



The Assistance League North Coast builds wardrobes and self-esteem for our students with a quarterly shopping trip to JC Penney. Members pair with a youth and "shop til they drop."

"New Haven has positively impacted the lives of many of my clients' children over the last few years providing empathetic and exceptional academic and behavioral therapeutic intervention services in their day and residential treatment programs. My clients remain forever grateful for New Haven's efforts in changing the trajectory of their children's academic and social/emotional journeys."

Wendy M. Housman, Esq.
Special Education Advocate
Temecula, California



HOW WE MAKE AN IMPACT

The Cost of a High School Dropout... Why we do what we do

Career academies like New Haven have the potential to positively impact not only the lives of at-risk youth, who are the most prolific high school dropouts, but also the social-economic health of our community.

While some believe educational reform means a new and radically different approach is necessary to address the needs of at-risk youth, there is consensus among educational experts that the school system can reach these students by providing Career Technical Education in a setting where there is ample support and opportunity. Career academies like New Haven have been found to address the root cause of the dropout issue, which is necessary to reduce crime and avert the associated costs of wayward youth.

CATERING4YOUTH

Why Cater with New Haven?

New Haven's focus on career technical education and life skills prepares youth to progress beyond bottom rung jobs and into a career where their personal goals can be fulfilled. Our Catering4Youth Academy is a delicious addition to our entrepreneurial leadership curriculum. From exotic chicken satay to savory corn chowder to mouth-watering cheese and basil panini sandwiches to delectable chocolate-covered treats, everyone is dishing about the gourmet goodies that are served up by our enthusiastic youth chefs. Designed to integrate industry-based standards with academic instruction, this innovative learning environment engages non-traditional learners and prepares them with the knowledge and skills necessary to graduate with a high school diploma and pursue post-secondary education and training. The academy provides job preparation as it creates multiple pathways leading to entry-level hospitality employment for our enterprising youth.

*All food handlers are Food Safety Certified.

Call today to book your event!
(760) 630-4035
www.newhavenyfs.org



"New Haven's Catering4Youth program provided an array of appetizers for a social function of 50 people at a local winery. We can't say enough about the quality of the presentation and professionalism of the Catering4Youth program."

*Barbara Bradham
President, Assistance League North Coast*



Trade Tech was founded in 2007 by New Haven with a mission *"To graduate students with a strong blend of academic and workforce competencies necessary for future success in post-secondary education and in the building and construction industry."* Located in the heart of Vista, Trade Tech was designed to address many of North County's economic challenges; namely, poor school achievement in reading and math; increasing high school dropout rates; a perceived lack of access to higher education; a lack of educational options and work opportunities for vulnerable students; and a diverse population of young people who are unprepared for responsible participation in public life.

Trade Tech currently serves 180 students in grades 9-12 and welcomes all students in North San Diego County. Admission is not determined according to place of residence, although Trade Tech markets heavily to those youth that have been identified by the local school districts as at-risk of dropping out of high school or at risk of homelessness, and those who have expressed an interest in construction and engineering. Nearly seventy-five percent (75%) of attending students have spent their childhoods in families in the lowest third of the income distribution. Ethnic majorities are Hispanic (63%) and Caucasian (26%).

"The model work being done at New Haven recognizes and remedies the root causes of soaring dropout rates among at-risk youth. Not only does its program strive to reverse the negative impacts that unemployment has on our communities, but more importantly it guides boys into a hopeful and productive future."

George Chamberlin
Business Editor
KOGO AM 600



Trade Tech's Robotics team is in the top 1 percent in the world.



Trade Tech students build storage units for low-income seniors.



Trade Tech students graduate. Graduates head to College, Apprenticeships and the Workforce.

FRIENDS OF NEW HAVEN

Ten Years and Counting on our Friends

The Friends of New Haven believe that New Haven is a special organization that enables volunteers to directly impact the lives of at-risk teenage boys. The group was founded in 2007 by Nancy Irwin, who was inspired to spearhead the formation of an auxiliary after being introduced to New Haven's hopeful young men.

Volunteer membership helps supplement the services provided by New Haven Youth and Family Services. One hundred percent of the Friend's fundraising proceeds go directly to funding these beloved outreach efforts. Surplus funds support other needs at New Haven, such as home renovation or program development.

- ***Birthday Brigade***

It's hard to live away from home...away from family and friends. Regardless of the circumstances, our Friends recognize and celebrate the birthdays of every boy helping them feel valued and honored on their special day.

- ***Journey Bags***

Many times, the boys who arrive at New Haven come with their life belongings in a trash bag. Recognizing the lost dignity in this, the Friends see that each boy entering New Haven is greeted with a Journey Bag—a large athletic bag with personal items, such as sheets, towels, personal hygiene supplies, fresh baked home goods and a signed card. It is their first message that “this place” is different, that they are valued and that New Haven is just a stop on their journey.

- ***Activities***

Many of us take for granted the special life experiences we afford our own children—those experiences that bring joy, belonging and, as one youth so eloquently shared, “something to write about.” With the ongoing support of our Friends, New Haven youth are exposed to activities, such as skiing, golfing, fishing, surfing, kayaking, amusement parks and more.

- ***Rec & Leisure***

Remember that special adult who spent quality time with you doing crafts, building puzzles, seeing that you had good literature to read, games to play, models to build....Our Friends see that the special interests of our youth are noticed and addressed. With a special interest recreation and leisure fund, New Haven staff is able to attend to the individual interests of our youth.

What Satisfied Parents Are Saying

“Everyone at New Haven was exceptional and literally saved my son's life! I will always be thankful and grateful to all of them.”

“The counselors are very helpful, compassionate, understanding, and available when needed, even during off hours. Very glad for the assistance we received.”

“The entire team was extremely professional, knowledgeable, respectful, caring, and compassionate. Outstanding agency!”



New Haven Youth Christmas Party

This annual Christmas party is a heartfelt occasion when community sponsors join our Friends of New Haven and youth for an evening of personalized gifts, bowling, magic and good eats. This evening will make your heart sing in time for the holidays.

Coaches Toolbox

Funding of those special incentives that will lead a child to give up a difficult behavior and replace it with a more socially appropriate behavior can be challenging, at best. Many behaviors become a habit or a learned way of getting one's needs met. A Friend funded program, the Coaches Toolbox allows our behavioral coaches to explore and personalize behavioral incentives and to reinforce positive behaviors.

Friends of New Haven Executive Committee

Tashi Maldonado, President

Crista Swan, Past President (2007-2016)

Tiffany Thielmann-Mera, Secretary

Betsy Lander, Treasurer

Chris Villasenor, Journey Bags

Nancy Irwin, Birthday Brigade

Debbie Dugan, Activities Rec/Leisure

Bonnie Frazier, Membership





A KID STORY: MEET ANDY

A little over two years ago, "Andy," came through our doors with a typical presentation: wounded, tired and angry. He wore thick glasses, had long wiry blonde hair, and a scowl of skepticism on his face that communicated the message we likely weren't going to be able to impress or teach him much at all.

Andy had built up a resume that had earned him the right to be considered for our program: threatening to "destroy" his previous high school, bringing a knife onto the campus and consistently ditching classes, where he would escape to a local gathering of homeless adults. While on paper his offenses looked criminal, after further investigation, they quickly proved otherwise. Andy had a long history of being bullied by his peers. His empty threat to do damage to his school was a flawed attempt to keep others at bay. Bringing a knife to school was Andy's approach to protect his only sister, who had also been the recipient of ongoing cruel treatment from peers. And finally, the elopement from school. Andy found value in ditching his classes to spend time with his mother a few miles away, where she resided in a homeless community. Albeit misguided, there seemed to be some logic to his behavior.

Our team was fortunate to have the opportunity to participate in the transformation of Andy's life. In our therapeutic program, his posture slowly shifted away from anger and towards gratitude. Over the course of the two years Andy spent in treatment, he found solace in walking the track that wrapped around the backfield. With his head phones on, Andy would make rounds singing to his favorite music: German Heavy Metal. This walk became part of Andy's rhythm during his journey in the program. To think, decompress and to sing.

He made and met his goal to complete his high school credits and receive a diploma, a feat that seemed far out of reach during his early years. Now enrolled in college, Andy's plan is to get degrees in counseling so that he can one day be a positive change agent for the homeless population. We could not have picked a more perfect vocation for him.

Andy is definitely missed, but one only has to look to the track in our backfield and imagine our quirky friend belting out his favorite German tunes to bring our memories of him back to life. Rock on Andy!

DONORS

5th Axis Inc.
A. H. Stubblefield
Abbey Carpets
Adam Armstrong
Adora Salon
Aesthetically Pleasing Medical Spa, Inc
Agri Service, Inc.
AJL Charitable Foundation
Akira & Kumiko Niwayama
Alan & Debbie Lane
Alan & Gina Jordan
Alan & Pam Araw
Alan Acre
Alan Kallas
Alberto & Victoria Rosales
Alder Management Group
Alecia Tilch
Alex Rodriguez
Alexia & Rob Scheele
Alicia Romo
Alisha Geiger
All California Mortgage
All Seasons Escrow
Allan & Phyllis Galt
Alpha Project
Alphagraphics
Amanda Mitchell
Amazon Smile
Amber Ter-Vrugt
American Youth Soccer Organization
Ameriprise Financial Services, Inc.
Amie Butman
Amy Edey
Anastasia & Cameron Marks
Andra Moran
Andrea Bacon
Andrea Gherini
Andrew Andover
Andy & Margaret Kawasaki
Angel's Depot
Angela Palmer
Angels Baseball Club
Anise Athari
Anita Ambegalkar
Anita Hewison
Ann & Jim Connelly
Ann Enriquez-Kelly
Ann Lange
Ann Shelly
Anne Fallone
Anne Speraw
Annie Sahhar
Anthony & Lynette Pack
Anthony Drown
Anthony's Fish Grotto
Aquatic Aviaton
Art Aviles
Arthur Page
Arturo Aviles
Ashley Dotson
Assemblymember Rocky Chavez
Assistance League of North Coast
Associated Builders and Contractors
AT&T Employee Giving Campaign
Audrey Mondero
Audrey Prevost
Austin Delaney
Austin Gontang
Avenge Sevenfold
Avril Hibberd
Barbara Bolin
Barbara Bradham
Barbara C. Eastman
Barbara Carter
Barbara Eager
Barbara Harris
Barbara Mannino
Barbara Miller
Baron Center
Barona Band of Mission Indians
Barona Casino & Resort

Barry Robbins
Barry Shepard
BBS Manufacturing
Becky Edwards
Becky Harwood
Becky Quinn
Belching Beaver Brewery
Belly Up
Ben & Elise Walderman
Benson Family Foundation
Berg Electric Corp
Bernardo Lopez
Berry Young
Bertha Lopez
Beshay Enterprises
Bessemer Trust Company
Beth Davis
Betsy Crane
Betsy Heightman
Beverly Gamblin
Bill & Leslie Martin
Bill & Linda Gibney
Bill & Louise Vandling
Bill & Susan Berridge
Bill & Twila Ginn
Bill Clark
Bill Foley
Bill Franzblau
Bill Henry
Bill Martin
Bill Record
Bill Stein
Billiejean Cerda
Birch Aquarium
Bluepoint Solutions
Bo Pritchett
Bob & Mary Puente
Bob Noble
Bob Teglia
Bobbi Nunn
Bobby & Lori Jones
Bonnie Frazier
Bonnie Klotzly
Boomers
Boys and Girls Club of Vista
Boys and Girls Foundation
Brad Peterson
Brad Wiscons
Branham Family
Brenda Jaeger-Das
Brendan Van Cleve
Bret Gann
Bret Glidden
Brett & Janine Korf
Brian & Amy Yellen
Brian & Angela Clark
Brian & Kerri Woodward
Brian & Laura Lavin
Brian Cox Mechanical
Brian Daly
Briar Rose Winery
Bridgette Keene
Briggs Nursery
Brighton Collectibles
Brooke Silverstein
Bruce & Kriss Stewart
Bruce & Marianne Schiff
Bruce & Susan Palmer
Bryan & Jan Scism
Bryan Giese
Bryce & Gigi Goldman
Buca di Beppo
Bud & Fran Tovar
Burger Construction
Buzz & Maria Waloch
Buzzy & Lisa Sailer
By Referral Only
Cabo Inn Hotel
Caboodle Cartridge
Caia Koopman
Caitlynn T Rodarte

Cal-A-Vie Health Spa
California Bank & Trust
California Department of Parks & Recreation
California Special Districts Association
California West Communities
Callaway Vineyard & Winery
Calvin Harrah, Phd.
Cameron Fitness
Carl & Nina Schwetmann
Carl Ames
Carl Banks
Carl's Jr.
Carmen & Donna Mirabella
Carmen Leso
Carol & Jim Andrews
Carol Brady
Carol Herrera
Carol Malinski
Carol Williams
Cart Mart
Casey Yorman
Catherine D'Agostini
Cathy & Dean Wozney
Celeste Szot
Celia Garcia
Celine McCaddon
Cement Cutting
Certified Air Conditioning
CH Court Tech
Charlene Carty
Charles & Barbara Speck
Charles & Jacqueline Nagy
Charles & Katherine Salter
Charles & Sandra Riffe
Charles & Suzanne Grimm
Charles Henry Rouse
Charlie & Carol Buel
Charlie Snowden
Cheryl & Ray Geigle
Cheryl & Steven Dreyer
Cheryl Powell
Chili's
Chipotle
Chris & Crista Swan
Chris & Sara Davis
Chris & Tammy Megison
Chris Hotell
Chris Kates
Chris Quirarte
Chris Robertson
Chris Villaseñor
Chrissy Soler
Christina Sabori
Christine Amely
Christine Davis
Christine Jones
Christine Nguyen
Christine Thi Le
Christopher Davis
Chruch of St. Thomas More
Chuck & Maryanne Smith
Chuck Koller
Chuck Mol
Chuck Rabel
Church of Jesus Christ of Latter-Day Saints
Cindy Gonzalez
Cindy Mort
Cindy Olivier
Cindy Taylor
Cirque du Soleil
City of Carlsbad
City of San Diego
City of Vista
Clark Family Vineyards
Clay & Kristin Stanley
Clayhouse Wines
CMP Pendleton & Quantico Housing LLC
CNV Contractor News & Views
Colebrook Financial Company
Colleen Delost
Community Valley Bank

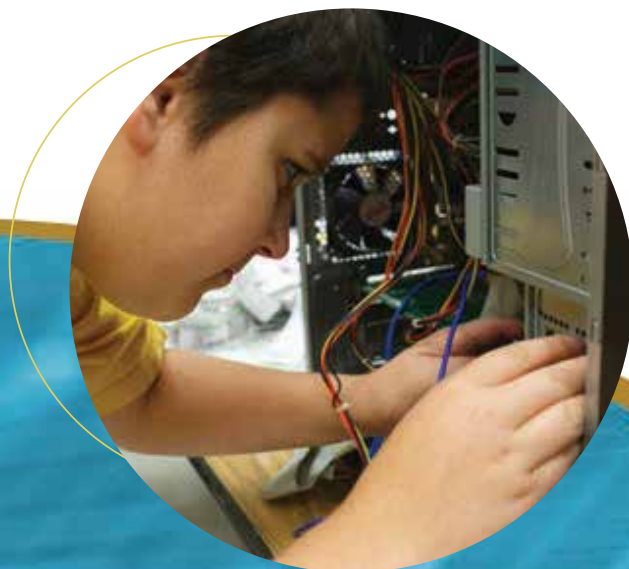
Connie Fletcher
Copy Care of San Diego, Inc
Corky & Patti Ewing
Costco
Courtyard by Marriott
Cox Auto Service
Coyote Bar & Grill
Crab Catcher Restaurant
Crafter's Companion USA
Craig Connelly
Craig Green
Craig Medical Distribution
Creative Concrete of San Diego
Creative Marketing Solutions, Inc
Creative Nails
Cristina Guevara
Cristina Iacobelli
Cristine Clark & Jamie Gilman Real Estate Team
Cristine Clark & Steve Jackson
Current Wisdom Foundation
Curt & Donna McRae
Cyndi Olson
Cyndi Sudberry
Cynthia Rice
D.G. & T.L. Del Sol
D'Agostini Family & Friends
Dal & Chris Williams
Dale Lawerence
Damian Leal
Dan & Annie Beasley
Dan & Heidi Dague
Dan Blackstone
Dan Denicola
Dan Finster
Dan Kem
Dan Pescar
Dana Haney
Dana Santana
Dani Alger Photography
Daniel & Mary Regan
Daniel Broderick
Daniel Hahn
Daniel Jose Rodriguez
Daniela Olusun
Danielle Aguas
Danielle McCarthy
Danielle Porter
Daniels Family Trust
Darci Strother
Darius Kyayat
Darlene Kelch
Darline Ulrich
Daryl & Sue McFarland
Daryl Sacks
Datron Holdings, Inc.
Dave & Busters of San Diego
Dave & Darcy Sondag
Dave & Mary Jo Gurnell
Dave & Megan Carter
Dave & Stacy Harris
Dave Rinehart & Erin Twohy
David & Jan Peters
David & Johanna Kittmer
David & Julie Lowen
David & Keely Brewer
David & Stacy Harris
David Anderson
David Francisco
David Gerdes
David Green
David Liu
David Newhan Baseball Academy
David Rodgers
David Shaw
David Sherman, O.D.
David Vermillion
David Wexler, Ph.D.
Davin Waite
Dean & Cathy Wozney
Deanna Miethke
Debbie DiBenedetto

Debbie Fisher	Elizabeth Timpson	Grady & Deborah Machnick	James Previti Family Foundation
Debbie King	Ellen Jackson	Grant & Julie Wright	James Roberts
Debbie Lightner	Ellise Coit	Grant Daversa	Jamie Gilman
Debbie Rayner	Emad Elhalaby	Greg & Leslie Harris	Jamie Omens
Debbie Shelton	Emily Rothman	Greg & Marisa Greishauber	Jamieson Slough
Debby Savage	Enrico & Ann Pinamonti	Greg Moser	Jan Bowman & Steve Powell
Deborah Harper	Eric & Maribel Valles	Greg Schneckluth	Jan Golleher
Deborah Haydis	Eric & Michele Hoaglund	Gregg & Karen Landers	Jan Harper
Deborah Torres	Eric & Paige Sanders	Gregg Engels	Jan O'Reilly
Deena Schmidt	Eric & Torrie Magee	Guardian Companies	Jan Pintar
Del Mar Sea Coast Republican Women's Federated	Eric J. Korevaar	Gurrera & Associates	Jan White
Delores Chavez-Harmes	Erica Johnsen	Guy's Grids	Jane Balser
Deniese Carollo	Erika Vitti	Guy's Publishing	Janet Ballenger
Denis Boudreau	Erin English	H Foxy	Janet Feintuch
Denise Harris	Erwin & Cindy Omens	H.G. Fenton Company	Janet Harper
Denise Neary	Estelle Cunningham	Hal & Andrea Sieling/Stamm	Janet Powell
Denise Russell	Eviance, Inc.	Hal Sieling	Janet Proctor
Dennis & Shelley Leach	F.R. Bean Manufacturing	Halle Shilling	Janice Farnow
Dennis Capps	Falcon Valley Group	HangZen Surf School	Janice Norton
Derek Aydelotte	Fanny Levy	Harbor Fish & Chips	Janna Steffan
Derek Greene	Fay Tahmassbi	Harold & Yolanda Tilbury	Jason Gurka
Derris Jones	Felicia Foster	Harvey Bush	Javier Collazo
Deyl Kearin	Fenley Family Donor Advised Fund	Hass Team Realty	Jay & Anna Manwaring
Diana Richards	Fernando Sanudo	HD Supply	Jay Borrero
Diana S. Aaron	FIRST	Heather Frost	Jay Young
Diane Bellerive	First National Bank of So Cal	Heather Rakowski	JC Penney
Diane Carlson	First National Bank of Southern California	Heather Ravenscroft	JC Penney Hair Salon
Diane Eisenrath	Flora & Ralph Fallone	Heather Winfield	Jeanette Taylor
Diane Ianni	Fog Catcher Inn	Hedy Brown & Arthur Wilde	Jeanette Yglesia
Diane Koester-Dion	Fran Jensen	Helen Bozigian	Jeanne McGuire
Diane Moore	Frances Thiercof	Helen Clark	Jeanne Smith
Diane Pal	Frank & Ericka Herrera	Helen Frederick	Jeannine Resha & Bob Burke
Diane Rodriguez	Frank & Julie Valles	Helping Hands	Jeff Andrews
Dianne McMillian	Frank & Michelle Patzium	Hennessey's Tavern, Inc	Jeff Budro
Dick & Joan Wilson	Frank Mercardante	Hilary Loretta	Jeff Kozlowski
Dick Delaney	Frank Shubert	Hilton Garden Inn	Jeffrey & Bree Bolognese
Dick Wilson	Fred & Linda Knapp	Holiday Bowl	Jeffrey Olsen
Disneyland Resorts	Freddi Parker Health Coaching	Holly Williamson	Jeffrey Sitcov
Dominic & Christine Polito	Fresh & Easy	Home Depot	Jennifer Barter
Dominic's at the Harbor	Frieder & Sigrid Hofmann	Homewood Suites in Carlsbad	Jennifer Boyd
Dominique Dixon	Friedman Brannen LLP	Hornblower Cruises & Events	Jennifer Brown Shaw
Don & Ann Cottrell	Friends of Pacific Rim Elementary	Howard & Virginia Levenson	Jennifer Gundrum
Don & Donna Schempp	Friends of Rollo	Hunter Industries	Jennifer Johnson
Don & Janis Jolly	G. G. Salvatierra	I Am Hope Project	Jennifer Macias-Benitez
Don Laughlin's Riverside Resort Hotel & Casino	Gabriel B. Wisdom	I love Bagels	Jennifer McGready
Don Sando	Gabriel Swaney	iGive	Jenny Taylor
Donald & Debra Dabbs	Gail Jakimzak	In Full Bloom Garden Design	Jeri L. Canfield
Donald & Martha Barker	Gail Womack	In-N-Out Burgers	Jerry & Jeanie Burwell
Donald Bartletti	Garland Worthington	Indian Joe brewing	Jerry & Rosanne Adams
Donald Murphy	Garnet & Ralph Baas	Infinity Character Development Programs	Jerry & Rose McCann
Donn & Shari Bleau	Garrett Gray	International Academy of Science	Jerry & Wendy Lasker
Donna Caperton	Gary & Gwen Luoto	Invasion Laser Tag	Jerry Black
Donna Harper	Gary & Mary West Foundation	Investigative Lieutenant's Union	Jerry Butkiewicz
Donna J. Crowl	Gary & Samantha Fletcher	Irene Bwayo	Jersey Mike's Subs
Dorothy Hornkey	Gary & Sheryl Reiner	Irma Butler	Jesse Steinberg & Dave Liu
Doug Borden	Gary & Val Flynn	Iron Fist Brewing	Jim & Ann Mulvey
Doug Uhler	Gary Caruso	Irwin Morse	Jim & Cathy Moran
Douglas Ito	Gary Duffield	Isabel Alvarez	Jim & Debbie Devorak
Dr. Barry & Donna Jones	Gary Lanis	Isabel Gonzalez	Jim & Judi Hamman
Dr. Karen Haynes	Gaunt Construction	Isidoro & Maria, Anthony & Kelly Balistreri	Jim & Nancy Gosnell
Dr. Rosa Optometry	Gayle Marrett	Islands Fine Burgers & Drinks	Jim Spector
Dr.Phil McGraw	Gene & Nancy Giannulli	Issa Family Foundation	Jo Williams
Dura Paint	Gene Haas Foundation	J & W Lumber	Joan Blumeyer
Eco Windows	George & Carolyn Brown	J. Mitchell Patridge	Joan L. Liddle
Ed & Candy Johnson	George & Diane Robinson	Jack Collar	Joan McAlister
Ed & Jutta Laurino	George & Kay Copoulos	Jack Dugan	Joan Rhodes
Ed Hughes	George & Paulette Clark	Jack in the Box	Joann Counce
EDCO	George & Shay Williamson	Jack P. Brooks	Jodi Diamond
Eddie & Lisa Myers	George & Terry Chamberlin	Jacklyn Ann Sullivan	Jody Hillier
EDTEC, Inc.	George Piner	Jacqueline Cooper	Joe & Beverly Hale
Edward Jones & Company	George Pruitte	Jaime Pittman	Joe & Clare Sturtevant
Egle Athari	George Salas	Jake & Amy Zuanich	Joe & Joanne Calabro/Gervase
El Callejon	Gigi Gleason	James & Ann Gutierrez	Joe & Martie Napier
El Camino Rentals	Gill & Candy Lujano	James & Donna King	Joe & Shelley Petersen
Elaine Drake	Girard Foundation	James & Gail Gill	Joe Lucia
Elese & Michael Newman	Glen Brickner	James Cooper JR	Joe Mears
Elise Wolfson	GML Office Furniture	James Doray	Joey Pope
Elizabeth & Michael Flynn	Good & Roberts, Inc.	James Farley	Johannah Biavatti
Elizabeth Cortez	Good Family Trust	James Flick	John & Andrea Nowell
Elizabeth Freed	Gould Electric	James Gerken	John & Julie Forester
Elizabeth Jaka	Grace Anglican Church	James Peterson	John & Stacy Snyder

John & Susan Cabral	Kelly Moncure	Linda Ogo	Mary Ann Smith
John & Susan Joyce	Kelly Samuel	Linda Rocco	Mary Anne Herman
John & Tamara Diehl	Ken & Jody Follis	Linda Rutgard	Mary Breen
John Bowman EA Inc.	Ken & Lisa Cooper	Linda Strand	Mary Carol Hunt
John Corcoran Foundation	Ken Clark	Linda Wright	Mary Haubert
John Franklin	Ken Glaser	Linda's Gifts	Mary Hoffman
John Goldsworthy	Ken Stern & Associates	Lindsay & Karen Sparks	Mary Jane Kerber
John Haedrich	Kendal Floral LLC	Lindsay Joly	Mary Liu
John Harmata	Kenneth Shuttleworth	Lindsey Resha	Mary Miller
John Jensen	Kenninger Communications	Lisa & Nicolas Barthelemy	Mary Trotta
John Jobe	Kenny Lehmer	Lisa Courtemanche	Mary Vizzaccaro
John Jones	Kent & Brenda Shuman	Lisa Granados	Massage by Kirk
John Lekos	Kent & Lori Youngberg	Lisa Higgins	Matt & Kim Thorne
John Lucas	Kevin & Shalonda Goldsmith	Lisa Kitlas	Matt & Risa Waite
John Marchioni	Kevin Divine	Lisa Mitty	Matt Hansen
John Megorden	Kevin Drury	Lisa Partain	Matthew Harper
John Niedernhofer	Kevin Limbach	Lisa Promotico	McBride Financial Advisory/Philanthropy Concepts
John Runager	Kevin Page	Lisa Synder	McCarthy Family Foundation
John Webster	Khali Koetting	Lisa Tenney	Means Engineering
John Wolf	Kim Friedrichsen	Lissa Robinette	Melinda Forest
John Wolfe	Kim Park	Liz DeSantis	Melissa Alioto
Jonathan & Shannon Mann	Kim Ponzi	Lo'Vetta Bosworth	Melissa D'Agostini
Jordan Burke	Kim Sterk	Lois Corry	Mercotac, Inc.
Jose Gonzalez	Kim Whittemore	Lomas Santa Fe Country Club	Meredith Burrell
Joseph & Diane Sampson	Kimberly Jones	Lon Casey	Merv & Michelle Morris
Joseph Fegan	Kindred Spirits	Lorance Lisle Foundation	Metric Systems Corporation
Josephine Perry	Kingdom Builders Bible Fellowship	Loren LaMontagne	Metropolitan Water District
Josh Halwerda	Kirsten Ferrer	Lorene Jackson	Meziere Enterprises, Inc.
Joshua & Katrina Bell	Kitti Freitag	Lori Daub	Micaela El Fattal
Joyce Ruud	Kiwanis of Sunrise Vista	Lori Moss	Michael & Beate Russe
JR & Mary Rosales	Know Howe Tile	Lori Sanna	Michael & Beth Puente
Juanita Hayes	Knox & June Williams	Lori Sheldon	Michael & Joyce Axelrod
Judith Gagnon	Kobayashi Fitness Center/Zumba X Studio	Lori Shelton	Michael & Margene Mooney
Judy Brammer	Kokomo's Tanning Salon	Lori Williams	Michael Czysz
Judy Jones-Cone	Kolodny & Pressman, LLP	Lori's Treasures of Time Estate Sales	Michael DiBenedetto
Judy Kovi	Koursh Safrang	Lou Ferrero	Michael Ehrenfeld Company
Judy Pantazo	Krikorian Premier Theatres	Louise & Ron Moore	Michael Fenton
Judy Vernoy	Kris Winiecke	Luanne Schaeffer	Michael Hermann and Gina Lund
Julie Brown	Kristan Dyer	Lucia Capital Group	Michael Howland
Julie Grant	Kristen Pope	Luene Corwin	Michael Kern
Julie Post	Kristi Morris	Lupe Villalobos	Michael Melcher
Julie Tift	Kristin Bradham	Lynn Cihak	Michael O'leary
Juliet Cunningham	Kristina Fields	Lynn Drotter	Michele Massion
June Duet	Kristina Howard	Lynn Sapin	Michelle & Brian Hanner
Justin Reynolds	Kurt & Teddy Filipovitch	Lysa Cutler	Michelle Conway
Justine Wendt	Kurt Reisig	Mack Synder Rau Foundation	Michelle DeAngelis
Kaitlyn Gebr	Kyle Jackson	Madeleine Harless	Michelle Garcia
Kara Langham	La Costa Coffee & Vending	Maderas Golf Club	Michelle Lepak
Karen & Michael Rahilly	La Jolla Shores Hotel	Mandy Maddox	Michelle Leshner
Karen Black	La Paloma Restaurant/Cantina	Manna Charitable Foundation	Michelle Spaulding
Karen Carrow	Lamppost pizza	Mara Fielding	Mick & Leah Sutton
Karen Mandel	Lana Poppen	Marc Hosy	Mickey Cassell
Karen Marshall	Lani Conti	Marc Mischkind	Mighty Garage Doors, Inc
Karen Mears	Lanny Arrowsmith	Marcel Bonée	Mike & Carol Pieczonka
Karen O'Donnell	Larry Holmes	Marcelo Martiniez	Mike & Dixie Reynolds
Karen Quimby	Larry Nuffer	Margaret Tovar	Mike & Donna Quinian
Karen Sparks & David Green	Larry Tanner	Marge Saberg	Mike & Judy Clark
Karin Trujillo	Larry's Beach Club Inc	Maria Chan	Mike & Kathy Thornton
Karl Higgins	Las Patronas	Maria Geiss	Mike & Kimya Owens
Karry Ann Ramirez	Laura Bennett Walker	Maria Kunac	Mike & Liz Fenton
Kasia Mikulska	Laura Birns	Maria Wick	Mike & Lorraine Kent
Kassandra Finklea	Laura Birns Design	Marianne Lu	Mike & Marie Owens
Kate Ferguson	Laura Earl	Marieta's Restaurant	Mike & Nicole Lucas
Kate Rubalcava	Laura Nava	Marilyn Richtmyer	Mike and Kathy Adams
Katherine Bauer	Laura Rosenthal	Marilyn Stoke	Mike and Kay Nord
Katherine Davis	Laura Versaci	Marina Morales	Mike Davis
Katherine Jewell	Laura Wolfe	Mario & Christine Ansaldo	Mike Dorris
Kathleen & Steve Potts	Lauren Noia	Mario Manzano	Mike McFadden
Kathleen Gerhard	Laurie Berenson	Mark & Amy Kent	Mike Muldoon
Kathryn Del Acqua	Laurie Linden	Mark & Barbara Foreman	Mike Peters
Kathryn Murphy	Leap to Success	Mark & Doreen Berchard	Mike's Mixology
Kathy Loberg	Lee Laney	Mark & Heather Grennan	Mindy Fullerton
Kathy Naylor	Lee Nelson - Raimer	Mark & Laurie Rouse	Miracle Springs Resort & Spa
Kathy Oldham	Lee Puglisi	Mark & Marisa Ley	Mission Hills Church
Katie Leclerc	Leonard Garth	Mark & Mary Jo King	Missy Coleman
Katie Wyatt	Lesa Hughes	Mark Carnevale	Mojgan Majd
Katy Gerard	Lesa McDow	Mark Patenaude	Mojgan Majd
Kay Rosa	Leslie Dornick	Mark T. Byers	Mollie Smith
Kay Silverman	Leslie Richter	Marlene Garces	Monica Martin
Keith Blackburn	Libby Gutierrez	Martha Shaw	Monica Watkins
Keith Brown	Ligaya Bowman	Martin & Candy Lopez	Monster Energy Company
Kelli Synder	Linda & Glenn Palmedo Smith	Martin Jackson	Monterey Financial Services, Inc.
Kelly & Debbie Wolters	Linda Brault	Marty & Birdie Risen	Moonlight Stage Productions
Kelly & Kim Kline	Linda Doroski	Marty & Eileen Neumeier	Moonstone Beach & Bar
Kelly Bernie	Linda Howard	Marty Mummel	Mottino Family YMCA
Kelly Fyffe	Linda Monte	Mary Ann Norcia	Mrs. Davalos

Myrna Geis	Peter Woolf	Robert & Sandy Hahn	Sempra Energy Foundation
Nancy Calegari	Petsmart	Robert Bedford	Senior Grubby's
Nancy Colwell	Phil Lutgen	Robert Clelland	Servant Leadership Institute
Nancy Dameron	Phil Machamer, PGA	Robert Kempa Insurance Services	Seth Champion
Nancy Hawk	Philip Putich	Robert Marut	Shakira Davis
Nancy Jones	Philip Rodriguez	Robert Sandoval	Shalimar Kendall
Nancy Thornton	Phillip & Gaye Zinni	Robert Whitney	Shane Webber
NASA	Phillip Damon	Robin Anderson	Shannon Teichmann
Natalie & Stefan Schwartz	Phillip Feeney	Robin Swift	Shannon Trust
Natalie Schwartz	Phyllis Skall	ROC Industries, Inc.	Shannon, Hannah & Kelly Rumsey
Natalie Stillman	Pick Up Stix	Roccas Hair Design	Sharon Hall
National Charity League- San Luis Rey Chapter	Pier 39	Rock Swanson	Sharon Hougard
Neil Heimburge	Pina Shaw	Rod Roddenberry & Heidi Van Lydegraf	Shaun & Dani Alger
nepamuceno Garcia	PJ & Sandra Perrault	Roddenberry Entertainment	Shaw-Marie Clayburn
Net Gear	PM Industrial Supply	Roderick & Kimberley Dargie	Shawan O'Gorman
New Haven Youth & Family Services	PrANA	Rodney Beaulieu	Shawn Mitchell Jr
New Venture Christian Fellowship	Prasanna & Roberta Raasveld- Inamdar	Rodney Jackson	Shay Timms
Newell Dubail	Precision Graphic Systems	Roger Gillespie	Shelley Marsh
Niagara Conservation Corporation	Premier Carpet Care	Roger Jordheim	Sherline Products
Nick & Brianna Arentz	Pride of Vista Lions Club	Roland Garcia	Sherry Campo
Nick & Cindy DiBenedetto	Prince Hall's Free and Accepted Mason,	Ron & Heidi White	Sherry Yarbrough
Nick Di Benedetto	Order of the Eastern Star	Ron & Shelley Capps	Sheryl Brown-Wohler
Nicole & Josh Smith	Procopio	Ron Belville	Sheryl O'Hara-Jones
Noelle Wylie	Project Management Advisors	Ronald & Sybil Ward	Shirley Smith
Nolan Williams	Promises2Kids	Ronald Howell	Sid's Carpet Barn
Nordson Corporation	Pupologie	Rons Pharmacy Services	Siddharth S. Chhokar
Nordstrom Rack	Qiana Scheele	Roofing Wholesale Co., Inc	Sidney Frank Importing
North America's Building Trades Union	Rachael Williams	Rose Peck Valenzuela	Sieber Plumbing, Inc
North Coast Church	Rachel Alvarez	Rose Peck-Venezula	Sierra Pacific West
North County Carpet Cleaning	Rachel Steinman	Rosie & David Lopez	Silver Lakes Gymnastics
North County Health Services	Rachel Thomas	Rotary Club of El Camino Real	Silvia Mirabella
North County Self Defense	Racquel Kolsrud	Rowena Veroza	Simon Castillo
Nothing Bundt Cakes	Ralph Baas	Roxanna Ober	Six Flags
Oceanside Boats Rentals	Ralph Rubio	Roxanne Tate	Six Flags Magic Mountain
Oceanside Broiler	Ralphs/Food4Less	Rubios	SkillStorm
Office Depot	Rampart Hotel & Casino	Rudy Escarcega	Skin Authority
One Foot in the Blues Band	Rancho Environmental Services	Russ & Cindi Thurman	Skinsational Skin and Body Spa
One Industries Corp	Rancho Glass	Rusty Wright	Skip Catching
One Trust Mortgage	Rancho Oso	Ryan & Crystal Waugh	Slough Family
Operation Hope	Rancho Santa Fe Foundation	Ryan Egli	Slow Lane Familia
Orco Block Co	Rancho Santa Fe Women's Fund	Ryan Egli	Smashburger
Oregon Community Developers, LLC	Randy & Edelia Willis	Ryan Mincks	Sneaker Head Confessions
Oriental Trading Company	Randy & Mary Kohls	S. Burnell Waite	Solar Turbines
Otter Box	Randy Andrews	S.D. Natural History Museum	Solatube International
Pacific Coast Card Services	Raquel Michel	Sachiko Yenokida	Solutions for Change
Pacific Commerce Bank	Raub Mathias	Sally Korrisson	Sondra Peppe
Paige & Robert Vanosky	Raul & Ana Maria Castro	Sally Vanqorkom	Sony Electronics Inc
Pala Casino Spa Resort	Ray & Lorena Wilkins	San Diego ABC Apprenticeship Training Trust	Sophia Bouvier
Pam Tushak	Ray Winiecke	San Diego Air & Space Museum	Soroptimist International of Vista
Pamela Whitaker	Rebecca Milkey	San Diego Automotive Museum	Soup Plantation & Sweet Tomatoes
Panera Breads	Reggie & Shavon Lowndes	San Diego Botanic Garden	Spencer & Debbie Lawes
Parisa Farokhi	Rena Cornejo	San Diego Chargers	Spencer Davis
Partida Tequila	Rene Truffa	San Diego County Credit Union	Split Ends Hair Studio
Pasadena Playhouse	Residence Inn Anaheim	San Diego County Employees' Charitable Organization	SPY Optic
Patrice Saxon	Residence Inn Marriott Mission Valley	San Diego Daily Transcript	St. Germaine Children's Charity
Patricia Baldwin	Resort Capital Advisors, Inc.	San Diego Gas & Electric	St. Mark Golf Club
Patricia Burn	Rhino's Boxing	San Diego Hall Of Champions	Stacey Angstead & Tom Van Wie
Patricia D'Agostini	Richard & Anne Cline	San Diego Museum of Man	Staples
Patricia Lautenbach	Richard & Christina Fink	San Diego Music Exchange	Starbucks
Patricia Sprotte	Richard & Diane Studinka	San Diego Padres	Stefanie Schiff
Patrick & Jacquelynn Clark	Richard & Joyce Chan	San Diego Polo Club	Stephanie Howieson
Patrick & Kendra Pinamonti	Richard & Linda Alvarez	San Diego Zoo Global	Stephanie Jackel
Patrick Birmingham	Richard Carter	Sancon Engineering	Stephen & Karen Des Jardin
Patrick Coglianese	Richard Casdorph	Sandi Robinson	Stephen Burke
Patrick Davis	Richard J. Hale	Sandra & Greg Adams	Sterling Rose Limousines
Patrick McGlynn	Richard Kahl	Sandra Mangini	Steve & Ann Byer
Patrick Pinamonti	Richard Risinger	Sandra Spitzer	Steve & Becky Bedford
Patrick Willette	Richard Talmo	Sandy Burns	Steve & Daniela Taus
Paul & Janet Stannard	Richard Urmonas	Sandy Matheus	Steve & Kristin Sillman
Paul Drolson & Shannon Davis	Richie Cherkin	Sandy Mora	Steve & Lisa Alvarez
Paul Eckert	Rick & Danielle Delaney	Sarah Davis	Steve & Rosemarie Schmidt
Paul Le Comte	Rick & Nancy Irwin	Sarah Nicholson	Steve Bitgood
Paul Polito	Rick & Tammy Backus	Sarina Gutierrez	Steve Forrester
Paul Sarkaria	Rick Brown	Saul & Maria Lopes	Steve Lilly
Paula Chilton	Rick Hoffman	Saundra Valenzuela	Steve Sax Speaks
Paulette & Madison Britton	Rita Naranjo	Schiff & Shelton, Attorneys at Law	Steve Smith
Paym Greene	Rob & Teri Swette	Scott & Jan Cormany	Steven & Beverly Nord
Pechanga Resort Casino	Rob Martinez	Scott & Lori Risch	Steven Denholtz
Pet's Coffee & Tea # 342	Rob's Auto Repair (Rossello, Inc.)	Scott and Michelle Hughes	Stewart & Brenda Weissman
Peggy Bellock	Robby & Marcia Thorne	Scott Mol	Stewart & Thareen Allen
Peggy Galliano	Robert & Kathleen Silverman	Scott Wilson	Stone Brewing Co.
Penny Loing	Robert & Becky Horowitz	SDGE Northern Division Project Management	Stromsøe Insurance Agency
Pepper Tree Frosty	Robert & Diane Tyson	Sea Landing	Stuart & Julia Bloch
Pete & Colleen Bethea	Robert & Gail Vokey	Sea World San Diego	Sue Ann Minaglia
Peter Fowler	Robert & Kathi Steinke	Sean & Kathy Toulon	Sue Belmonte
Peter Phillips	Robert & Sandra Miller	Sempra Employee Giving Network	Sue Drawdy & John Lekos

Sue Frakes	Tina Lazcano	William Haun
Sue Sanderson	Tip Top Meats	William Matthews
Sun Country Builders	Toby & Tanya Stanley	Willie & Veronika Voelker
Sun Diego	Todd & Betsy Landers	Wilson Creek Winery
SunFresh Flowers	Todd Singer	Woman's Club of Vista
Susan Hayes	Tom & Amy Ricci	World's Fare
Susan McBride	Tom & Jane Lee	Wright On Communications
Susan Paloutzian	Tom & Leslie Casey	Wuksachi Lodge at Sequoia National Park
Susan Wyman	Tom & Nicole Bosecker	Yolanda & Jesus Betancourt
Sustainable Surplus Exchange	Tom & Patti Carson	ZamRay, LLC
Sutton Tree Services	Tom & Stacey Van Wie	Zenith Insurance Company
Suzanne Brewer	Tom Cassidy	Zephyr Cove Resort
Suzanne Feltman	Tom Flemming	
Suzanne Jones	Tom Koretke	
Suzie Kotolow	Tom McCaskey	
Suzy Kopolow	Tom Oeschger	
Sylvia Buesch	Tom Olsavsky	
Sylvia Duchesne	Tommy Thomson	
Sylvie Snyder	Tony Perez & Susan Horvitz	
Taco Caliente	Tony Williams	
Tamara Shoemaker	Tonya Ocloo	
Tamera Estep	Torrey Pines Bank	
Tami Eshelman	Toshiba America Foundation	
Tammy Dahl	Tracy Romero	
Tara and Roger Rakotz	Tri City Wellness	
Target	Tri-City Medical Center	
Tashi Maldonado	Trish Connors	
Taylor Guitars	Truist	
TaylorMade	U.S. Bank	
Technical Difference, Inc	Undited Methodist Women	
Ted Giesing	Unite Eurotherapy	
Teen Volunteers in Action	United Way of Central Maryland	
Tender Loving Canines Assistance Dogs, Inc.	United Way of Greater Kansas City	
Tere Wilson	United Way of San Diego County	
Teresa Morrello	United Way of the Inland Valleys	
Teri Cohen	Universal Forest Products	
Teri O'Brien	Urban Pizza	
Teri Rogers	USS Midway Museum	
Terri Eckhardt	Valorie Lancaster	
Terry & Michelle Moxley	Vanessa Hayflich	
Terry Adams	Vans- Carlsbad Mall	
Terry Erickson	Vans- Outlet Mall	
Terry Lynn Ewen	Velma Smith	
Terry Simokat	Velyn Anderson	
Terry Woods	Veronica Chiefo	
Teryn Allen	VFW Ladies Auxiliary 9327	
The Brigantine Family of Restaurants	Vibra Bank	
The Crosby at RSF	Vicor Mission Power Solutions	
The Crossings at Carlsbad	Victor & Clare Patenaude	
The Episcopal Refugee Network	Victoria Monahan	
The Eucalyptus Fund	Victoria Waufle	
The French Tradition	Victoria Wirthlin	
The Golf Club of California	Viola Wheelihan	
The Hyatt House	Virginia Gilbert	
The Leichtag Foundation	Virginia Mortensen	
The Museum of Tolerance	Virginia Patton	
The Old Broads Bunco Group	Vista Chamber of Commerce	
The Original Pancake House	Vista Education Foundation	
The Paintball Park at Camp Pendleton	Vista Entertainment Center	
The Parker Foundation	Vista Firefighters Association	
The San Diego Foundation	Vista Hi Noon Rotary Club	
The San Diego Polo Club	Vista Valley Country Club	
The Schmid Family	Vista Village Consignment	
The Stronghold	Vivek Chawla	
The Thomas C. Ackerman Foundation	W B Draper	
Theresa Liberio	Walter Tamulinas	
Therese Bissonnette	Warren & Sheri James	
This Old Shop	Warren Taylor	
Thomas & Carla Applegate	Watkins Wellness	
Thomas & Frances Powell	Wayne & Christine Miller	
Thomas Bilby	Wayne & Karen Campbell	
Thomas Davis	Wayne Heffner	
Thomas Donahue	WD-40 Company	
Thomas Schade	Welk Resorts	
Thomas White	Wells Fargo Community Support Campaign	
Thomas Yarbrough	Wendy Hoier	
Thoralinda Sayland	Wendy Housman	
Tickets for Kids Charities	Wendy MacLean	
Ticor Title	West Inn & Suites	
Tiffany Humphrey	Western CNC, Inc	
Tiffany Thielmann-Mera & Carlos Mera	White Water Inn	
Tim & Debbie Dugan	Whitney Dorn	
Tim & Judy Black	William & Joyce Ann Loper	
Timothy Wynne	William & Robin Chappelow	
Tina Duplessis	William Chang	
Tina Flores	William Gay & Dr. Laura Pyle	



New Haven
Youth and Family Services
P.O. Box 1199, Vista, CA 92085-1199
p: 760.630.4035 f: 760.630.4030
www.newhavenyfs.org